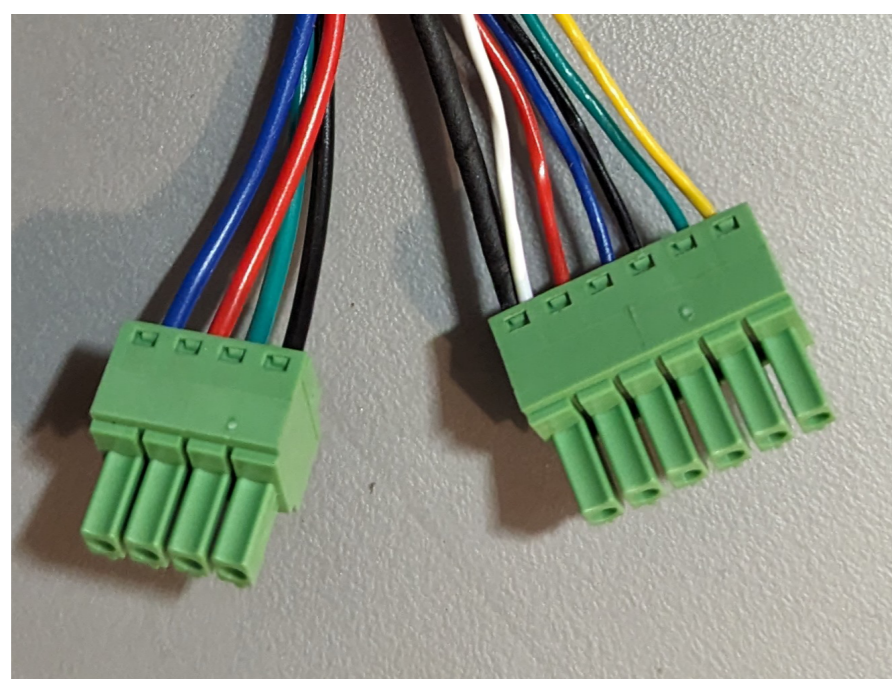


Motor to Driver:



X-Axis



Y-Axis 1



Y-Axis 2



Z-Axis



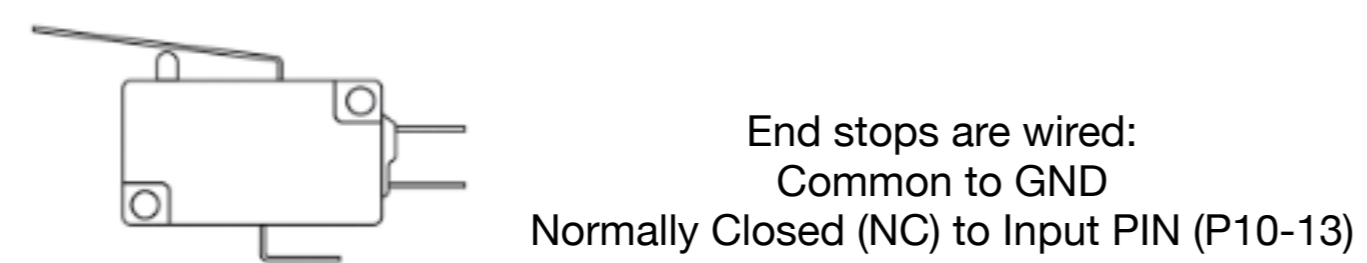
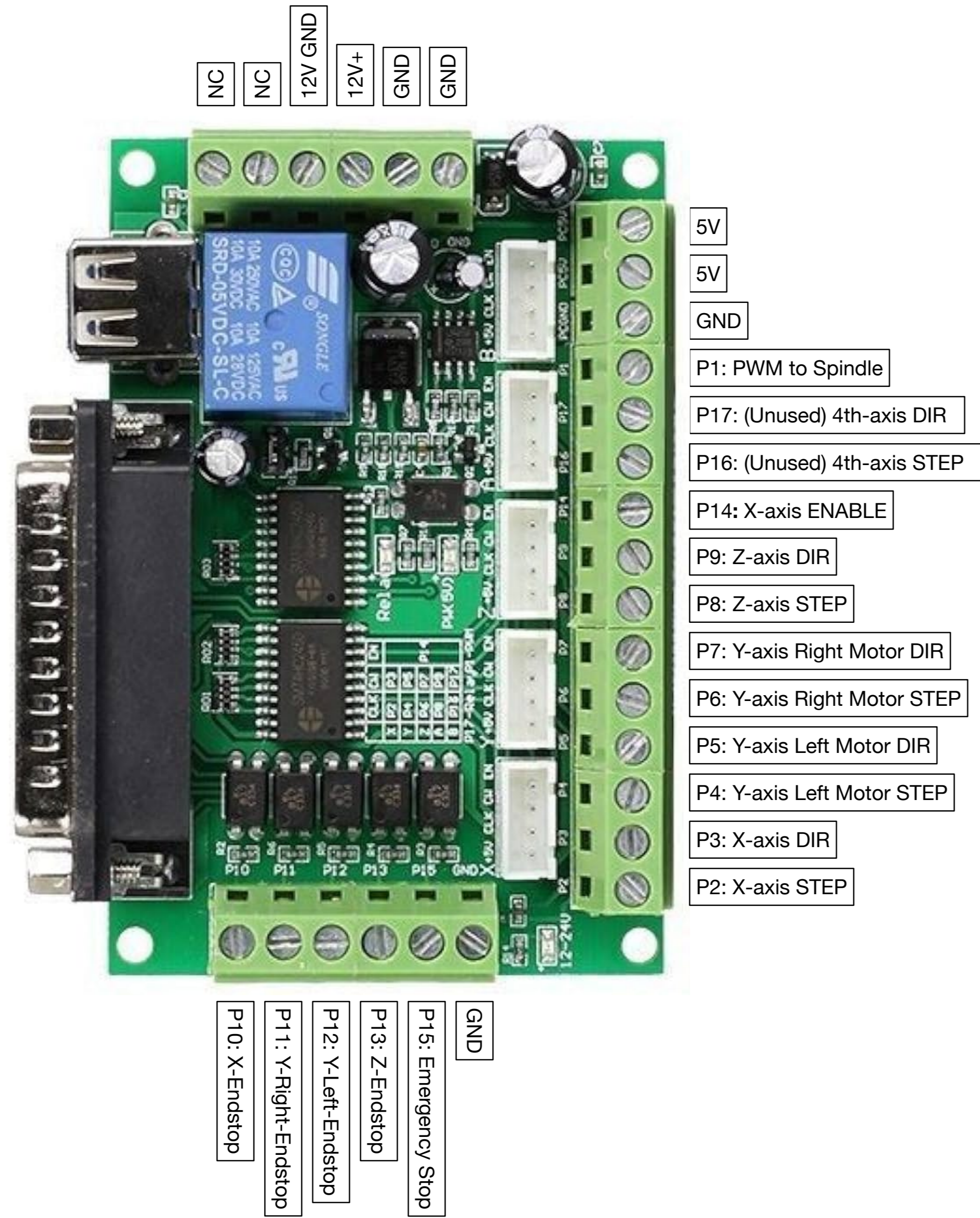
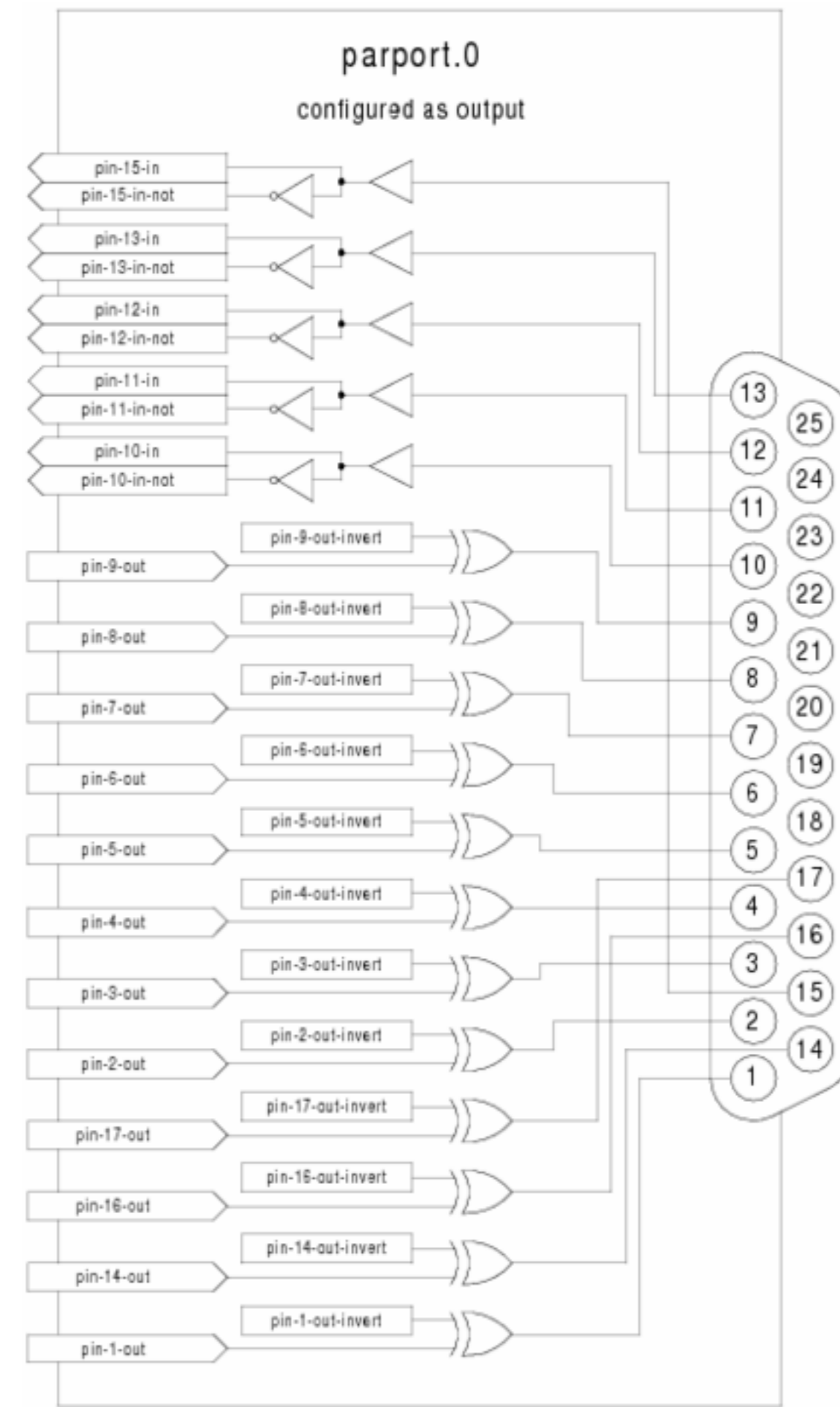
48V+ GND



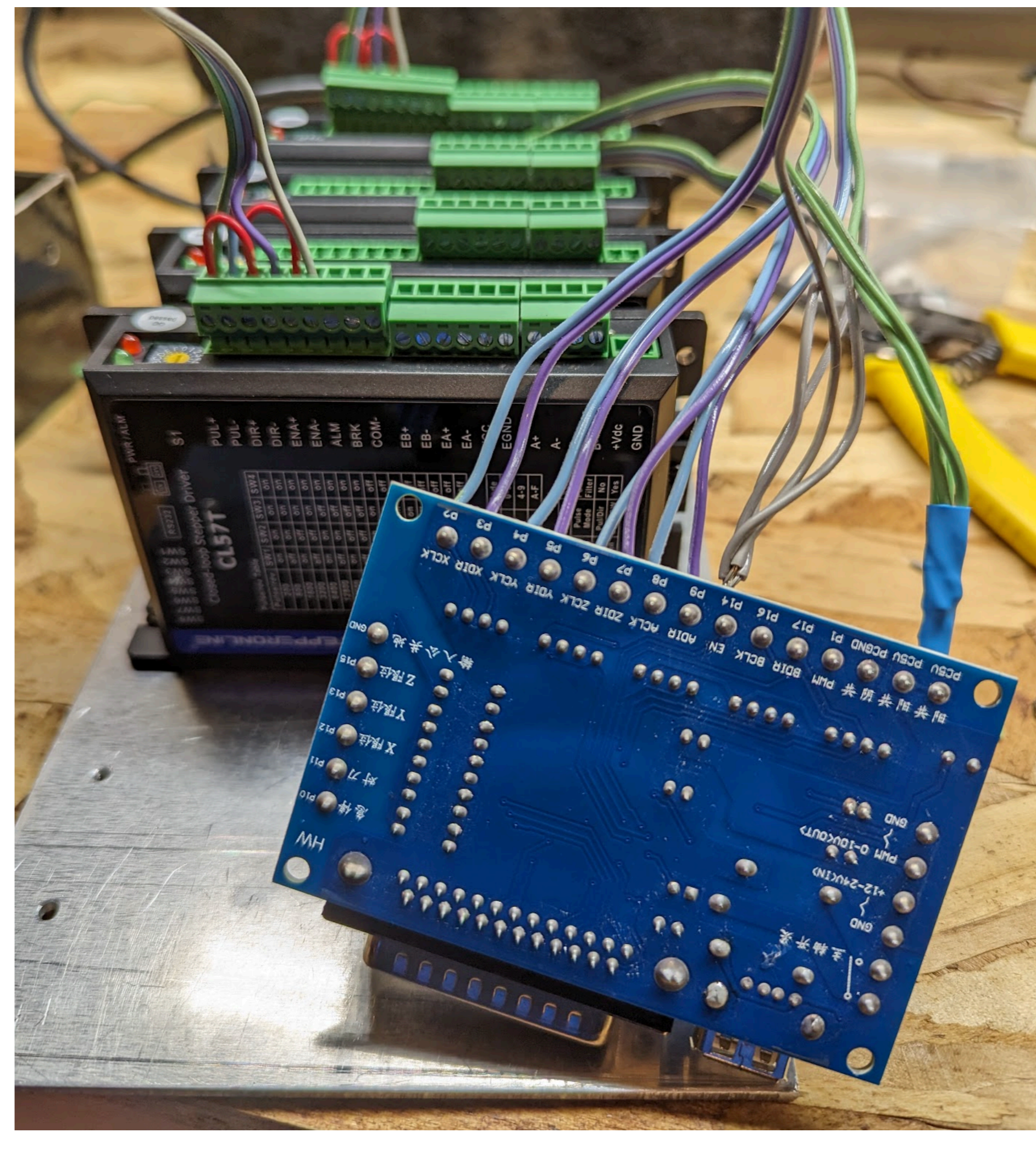
48V+ GND



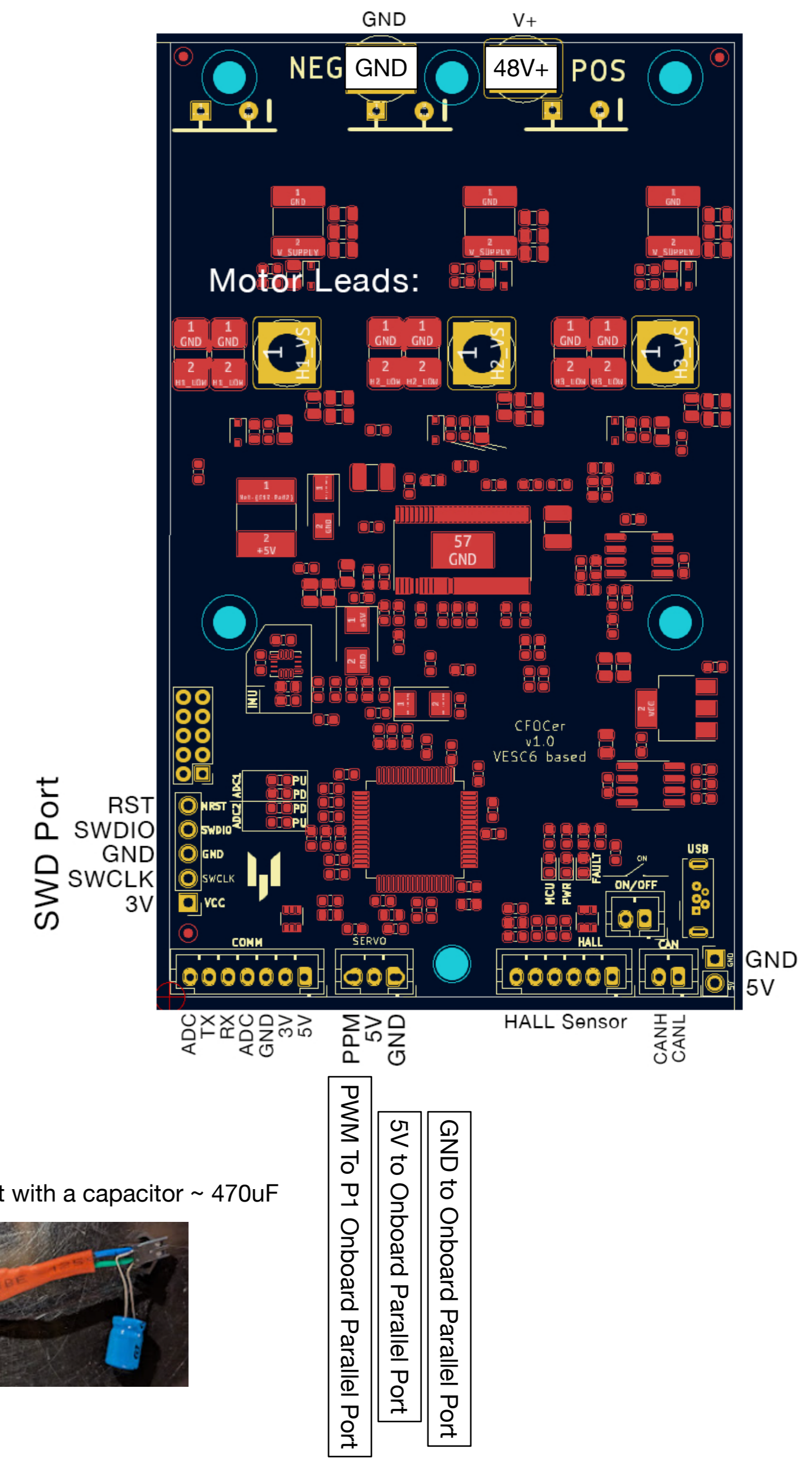
Onboard Parallel Port



Parallel Port to Stepper Drivers:



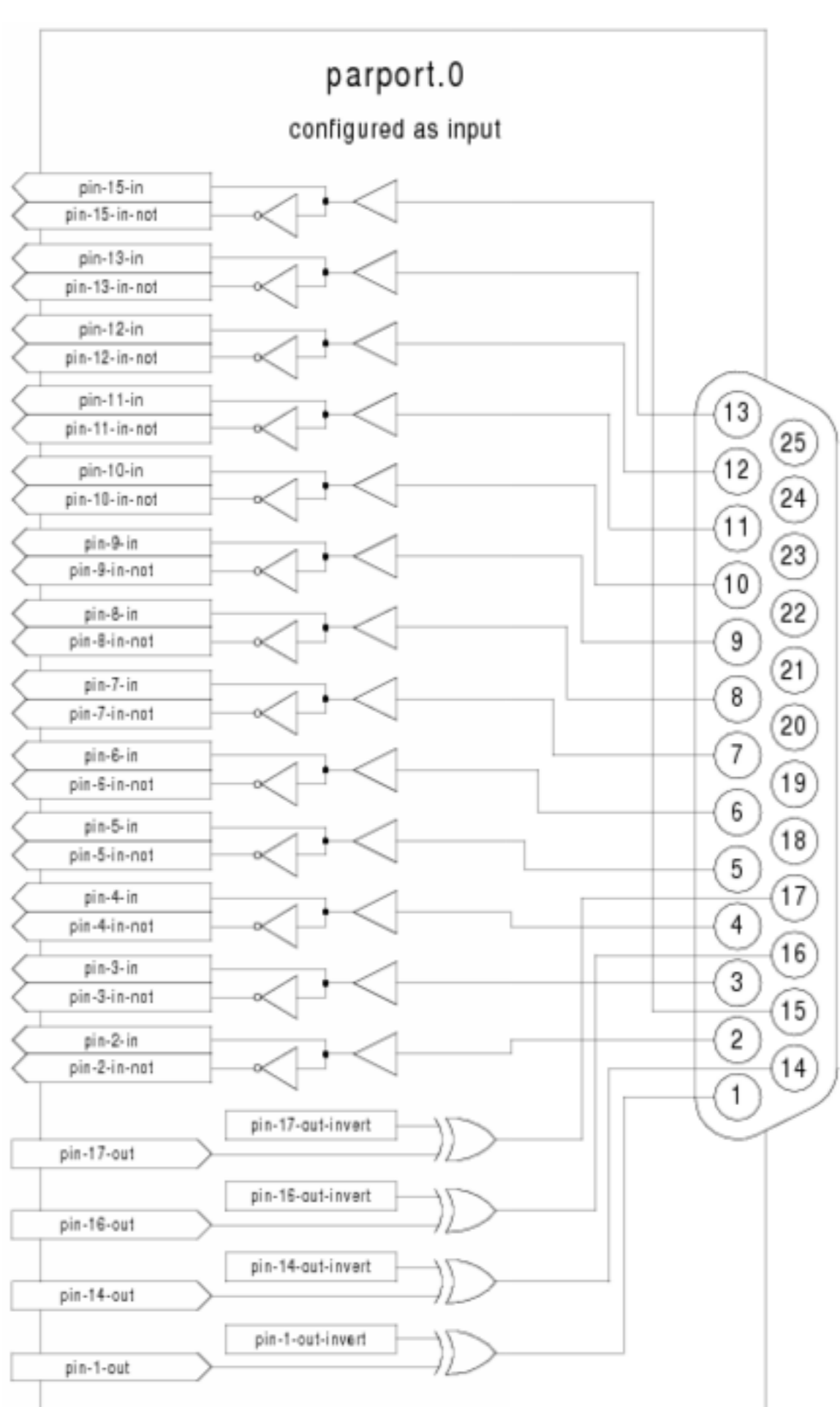
VESC Brushless Motor Controller



Smooth the PWM input with a capacitor ~ 470uF



AX99100 PCIe Parallel Port (Extra Input)



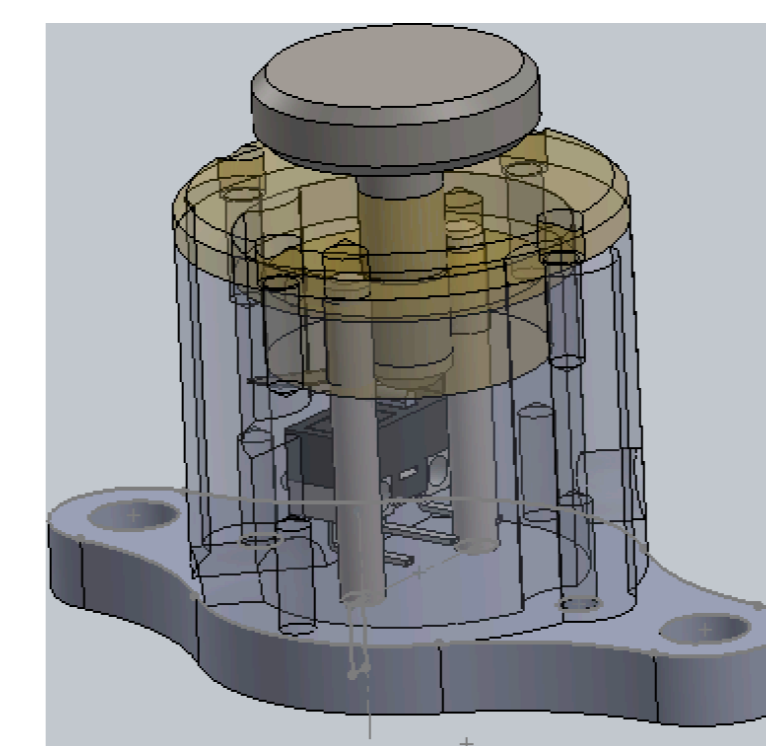
- ParPort P12: Tool Setter Input
- ParPort P11: Touch Probe Input
- ParPort P10: MPG Encoder A (5V 10k pull-up)
- ParPort P9: MPG Encoder B (5V 10k pull-up)
- ParPort P8: MPG Scale Button 2 (Mid)
- ParPort P7: MPG X-Axis Select Button
- ParPort P6: MPG Scale Button 1 (Low)
- ParPort P5: MPG Y-Axis Select Button
- ParPort P4: MPG Enable Button (Dead Man Switch)
- ParPort P3: MPG Z-Axis Select Button
- ParPort P2: MPG Scale Button 3 (High)



MPG



Touch Probe



Tool Setter